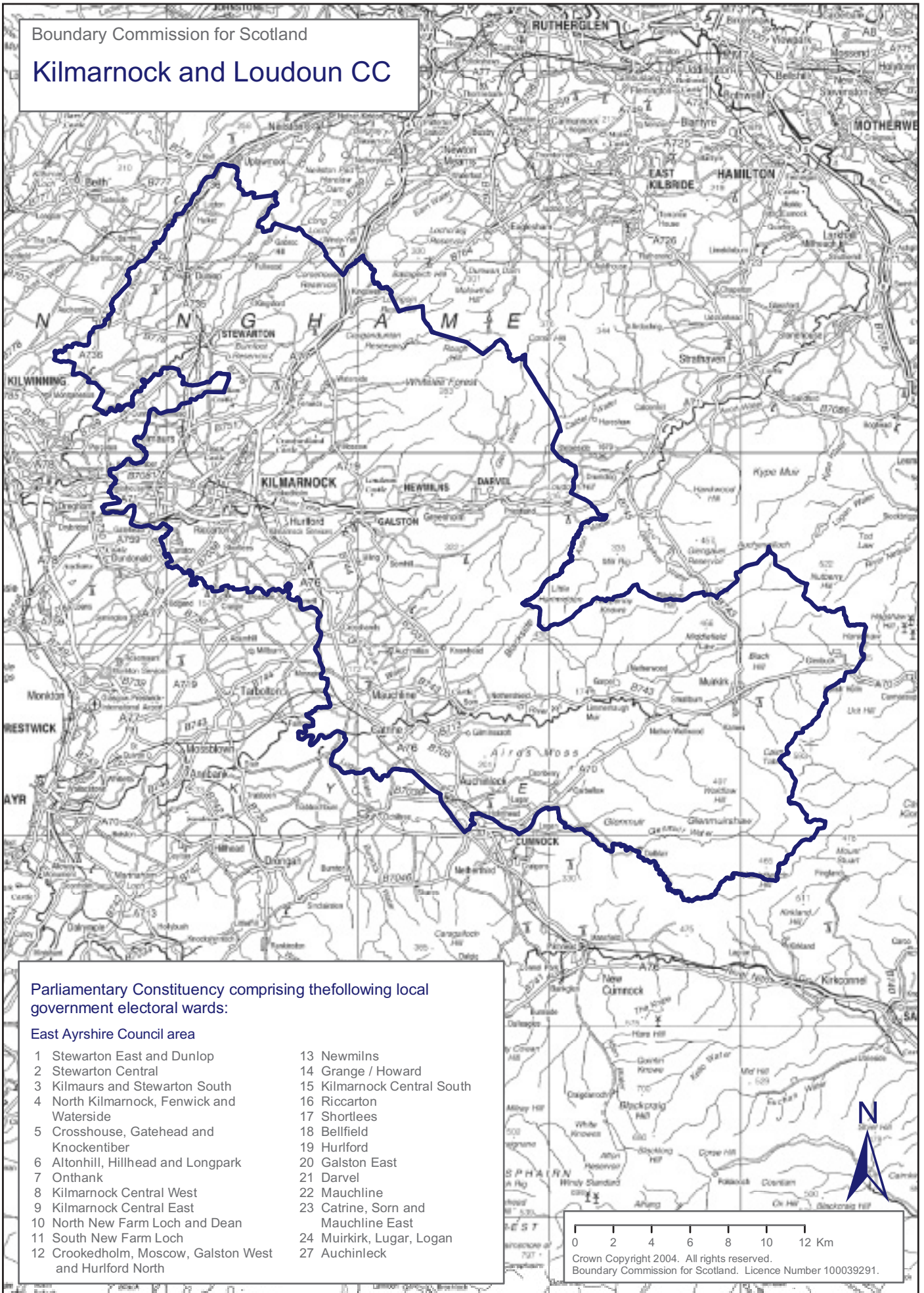


Boundary Commission for Scotland

## Kilmarnock and Loudoun CC



Parliamentary Constituency comprising the following local government electoral wards:

### East Ayrshire Council area

- |   |                                     |
|---|-------------------------------------|
| 1 Stewarton East and Dunlop                             | 13 Newmilns                         |
| 2 Stewarton Central                                     | 14 Grange / Howard                  |
| 3 Kilmaurs and Stewarton South                          | 15 Kilmarnock Central South         |
| 4 North Kilmarnock, Fenwick and Waterside               | 16 Riccarton                        |
| 5 Crosshouse, Gatehead and Knockentiber                 | 17 Shortlees                        |
| 6 Altonhill, Hillhead and Longpark                      | 18 Bellfield                        |
| 7 Onthank   | 19 Hurlford                         |
| 8 Kilmarnock Central West                               | 20 Galston East                     |
| 9 Kilmarnock Central East                               | 21 Darvel                           |
| 10 North New Farm Loch and Dean                         | 22 Mauchline                        |
| 11 South New Farm Loch                                  | 23 Catrine, Sorn and Mauchline East |
| 12 Crookedholm, Moscow, Galston West and Hurlford North | 24 Muirkirk, Lugar, Logan           |
|   | 27 Auchinleck                       |

0 2 4 6 8 10 12 Km

Crown Copyright 2004. All rights reserved.  
Boundary Commission for Scotland. Licence Number 100039291.